



CANAL DE PANAMÁ

REQUEST FOR INFORMATION (RFI)

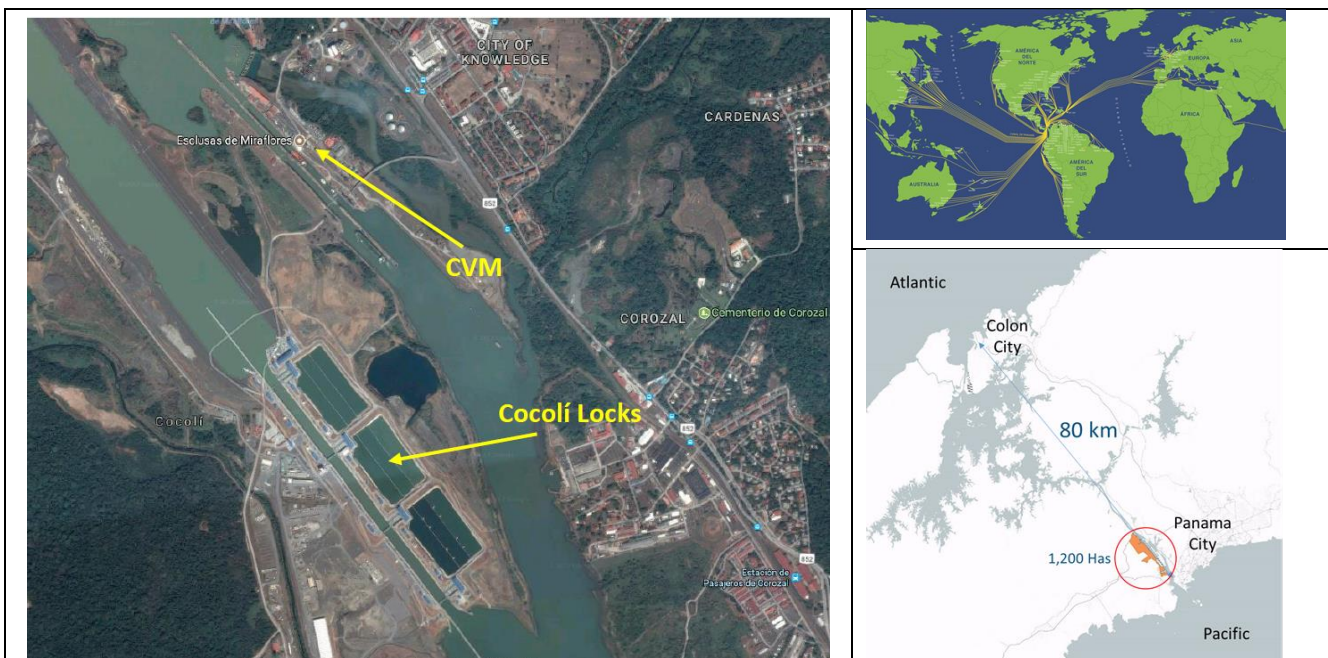
THE PROJECT: CONCESSION FOR THE DESIGN, BUILD, FINANCE, OPERATE AND MAINTAIN OF A CABLE CAR OR GONDOLA LIFT AT THE PANAMA CANAL

THE PANAMA CANAL AUTHORITY (ACP), as part of a market survey, is seeking information from interested qualified parties for the DESIGN, BUILD, FINANCE, OPERATE and MAINTAIN OF A CABLE CAR also known as GONDOLA LIFT ACROSS THE PANAMA CANAL, to be located in the area around the Miraflores Visitor Center (CVM), Miraflores Locks and the Cocolí locks, thereafter “The Project”.

As part of this market survey, ACP seeks to obtain preliminary market information and expression of interest for The Project, from qualified parties.

For avoidance of doubt this market survey is not a Request for Proposal (RFP) and there is no tender process at this stage; therefore this document cannot be considered as a promise of the ACP to enter into any tender process or accept a specific proposal. This RFI is issued solely to receive information and expressions of interest from potential parties for planning purposes.

The purpose of The Project is to foster tourism growth within the Panama Canal, by adding a complementary attraction that connects CVM’s premises and spans over the Miraflores Locks, towards the Cocolí Locks area located in the west area of the Panama Canal (and back). The intention at this stage is to evaluate if there is interest in qualified parties to participate in a future competitive tender process towards entering a concession contract with the ACP.



INTERESTED QUALIFIED PARTIES

For the purpose of this RFI, the ACP will consider as an interested qualified party, a company, business group or consortium, with combined proven experience in the design, construction, operation and maintenance of cable cars or gondola lift projects. Any interested qualified party will be requested to submit evidence of such experience. Any information provided by potentially interested parties will be used by ACP to better understand technologies available and system capabilities in the industry.

MIRAFLORES VISITOR CENTER

The Miraflores Visitor Center (CVM) is located at the Panama Canal Miraflores Locks and opens every day from 08:00 to 18:00. The CVM presents through exhibits, simulators, models and movies the history, evolution, performance and prospects of the Panama Canal, while conveying the waterway's importance for Panama and the world. It gives to approximately 2,150 visitors per day, the opportunity to watch from terraces, the lockage and transit operations of the Panama Canal from a short distance. The CVM has an area of approximately 18,000 square meters, which includes an open area of about 6,000 square meters and a closed area of approximately 12,000 square meters.

The Center also has a Theater for 170 seated people, four (4) exhibition halls, a restaurant with a panoramic view of the Miraflores Locks, two (2) snack bars, a terrace, a gift shop, a lounge for special events, an exterior promenade, and a parking lot. Other restaurants and theaters are being consider. An IMAX theater to be operated by a concessionaire (adjacent to the CVM) is at final stage of construction and is expected to be operating in the first quarter of 2018.

INFORMATION TO BE PROVIDED BY THE ACP

At this preliminary stage of the market survey, the ACP will share, only with interested qualified parties, general information of The Project concept, including visitor statistics, topographic and existing facility drawings and general area layouts.

DISCLOSURE

Please note that the information contained in this document is for information purposes only and neither the ACP, nor the authors of this document, are assuming any kind of liability for the contents of the document.

REFERENCE CONTACT

Franklin A. Samudio
Manager, Commercialization Section
(507) 272-7113 or (507) 272-7318
fasamudio@pancanal.com

All qualified and interested parties should contact us by email (FASamudio@pancanal.com), not later than December 31, 2017, to get the list of documents required.